









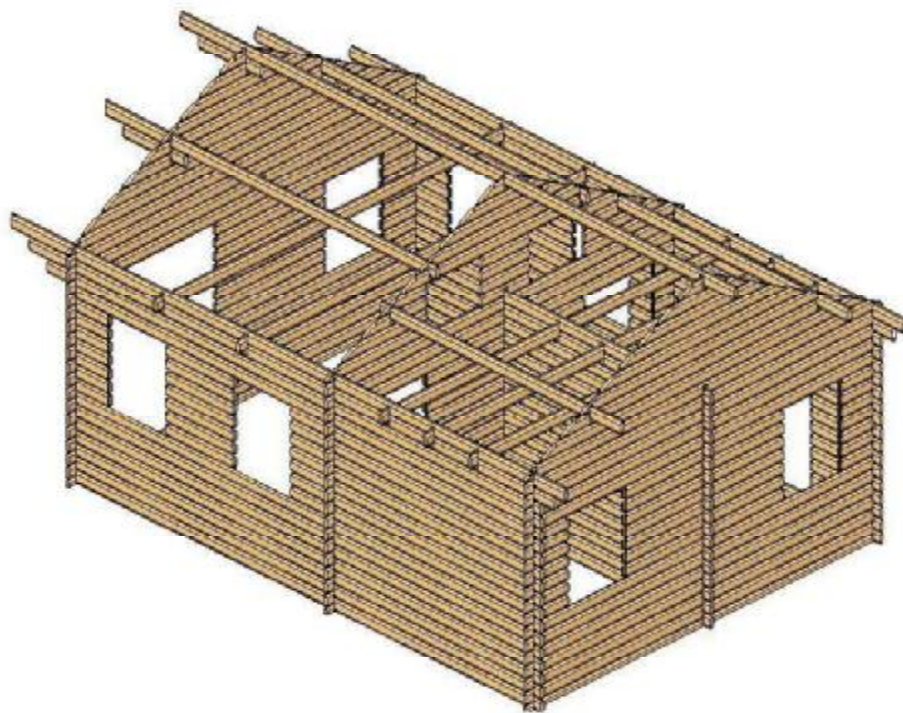
VISUALIZATION



Print

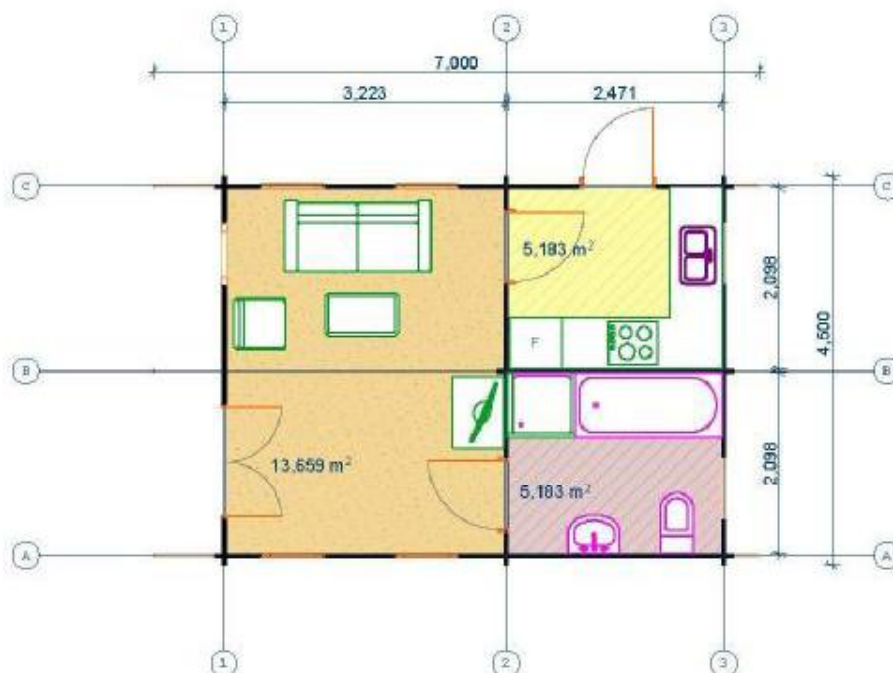
CONSTRUCTIVE 2

---



Print

NOTTINGHAM\_4,5X6



Nottingham 4,5 x 6 m  
Wall thickness 44 mm T&G Log cabin

Basement size: 4.34 x 5.84 m

- Wall Boards are flat faced with rounded edges
- The corbel of the roof around the whole cabin;
- Single 2xglazed windows and double 2xglazed door with original decorative beading;
- Shutters available (as extras);
- Canopy 1 m;
- The cabin includes the floor and roof construction;
- The cabin includes a big bedroom in the attic.

\* Veranda is supplied as an optional extra

\* Roofing shingles are supplied as optional extras

\* If you are going to assemble the cabin by yourself, please keep in mind that you will need screws and nails to fix the floor and roof boards and bitumen shingles.

See other cabins in 4x6 and garage

Print